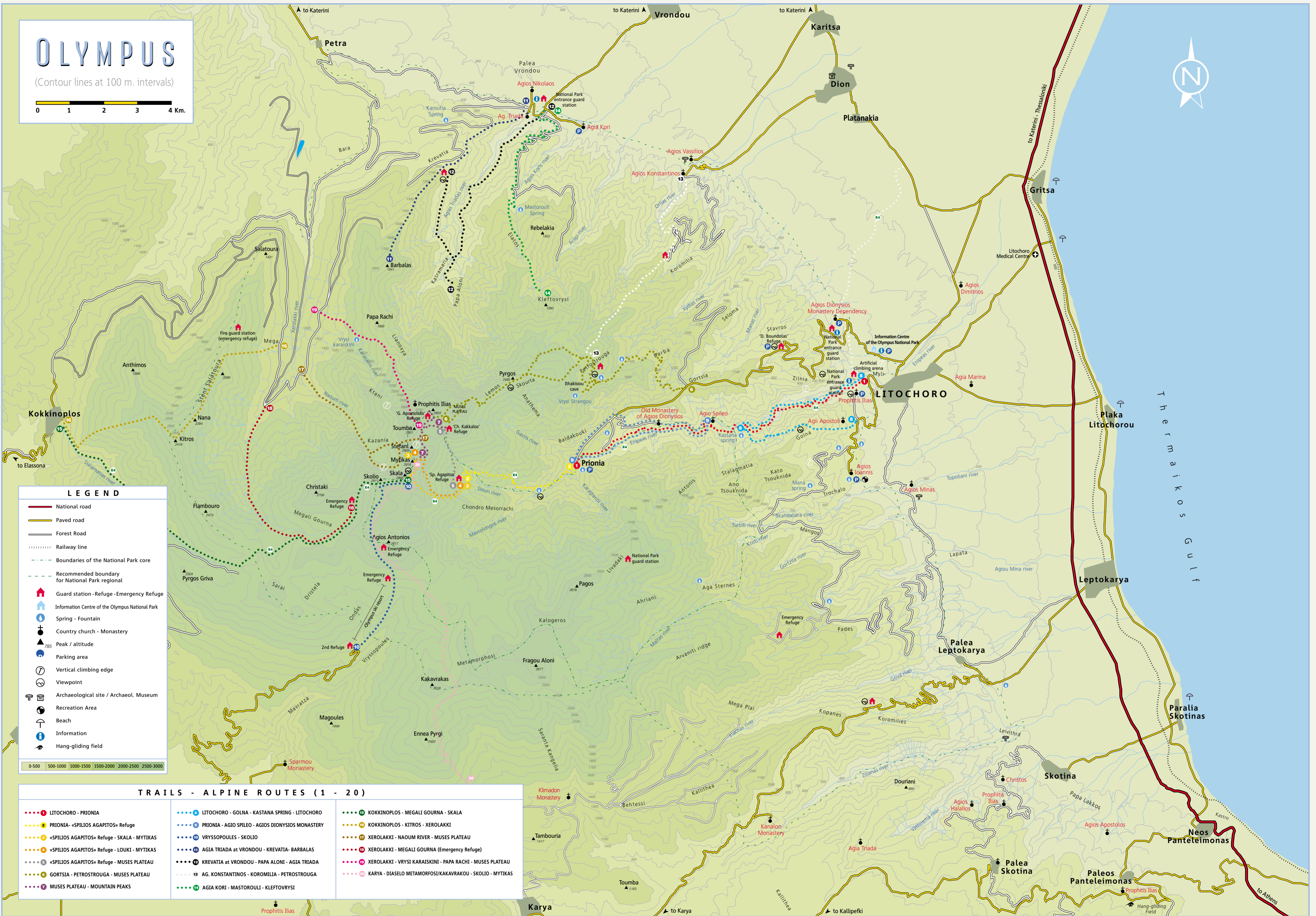


OLYMPUS

(Contour lines at 100 m. intervals)



LEGEND

- National road
- Paved road
- Forest Road
- Railway line
- Boundaries of the National Park core
- Recommended boundary for National Park regional
- Guard station - Refuge - Emergency Refuge
- Information Centre of the Olympus National Park
- Spring - Fountain
- Country church - Monastery
- Peak / altitude
- Parking area
- Vertical climbing edge
- Viewpoint
- Archaeological site / Archaeol. Museum
- Recreation Area
- Beach
- Information
- Hang-gliding field

TRAILS - ALPINE ROUTES (1 - 20)

- | | | |
|--|---|---|
| <ul style="list-style-type: none"> LITochoro - PRIONIA PRIONIA - «SPILIOS AGAPITOS» Refuge «SPILIOS AGAPITOS» Refuge - SKALA - MYTIKAS «SPILIOS AGAPITOS» Refuge - LOUKI - MYTIKAS «SPILIOS AGAPITOS» Refuge - MUSES PLATEAU GORTSIA - PETROSTROUGA - MUSES PLATEAU MUSES PLATEAU - MOUNTAIN PEAKS | <ul style="list-style-type: none"> LITochoro - GOLNA - KASTANA SPRING - LITochoro PRIONIA - AGIO SPILIO - AGIOS DIONYSIOS MONASTERY VRYSSOPOULES - SKOLIO AGIA TRIADA at VRONDou - KREVATIA - BARBALAS KREVATIA at VRONDou - PAPA RACHI - MUSES PLATEAU AG. KONSTANTINOS - KOROMILLIA - PETROSTROUGA AGIA KORI - MASTOROULI - KLEFTOVRYSI | <ul style="list-style-type: none"> KOKKINOPLOS - MEGALI GOURNA - SKALA KOKKINOPLOS - KITROS - XEROLAKKI XEROLAKKI - NAOUM RIVER - MUSES PLATEAU XEROLAKKI - MEGALI GOURNA (Emergency Refuge) XEROLAKKI - VRYSI KARAIKINI - PAPA RACHI - MUSES PLATEAU KARIA - DIASELO METAMORFOSI/KAKAVRAKOU - SKOLIO - MYTIKAS |
|--|---|---|